

# GROM-USB3/IPD4 for Nissan/ Infiniti SAT Emulation

For proper STEERING WHEEL CONTROL operation:

While playing USB/iPod, press and hold PRESET 1-6 one at a time until you hear a beep sound.

Preset C will contain AM/FM radio presets

## Nissan/Infiniti Vehicles that have PRESET A \* B \* C button

To switch between the GROM modes (USB or AUX), first press RADIO to enter XM/SAT MODE, then press "PRESET A B C button. Keep pressing the PRESET A B C button until you hear the Mode announce.

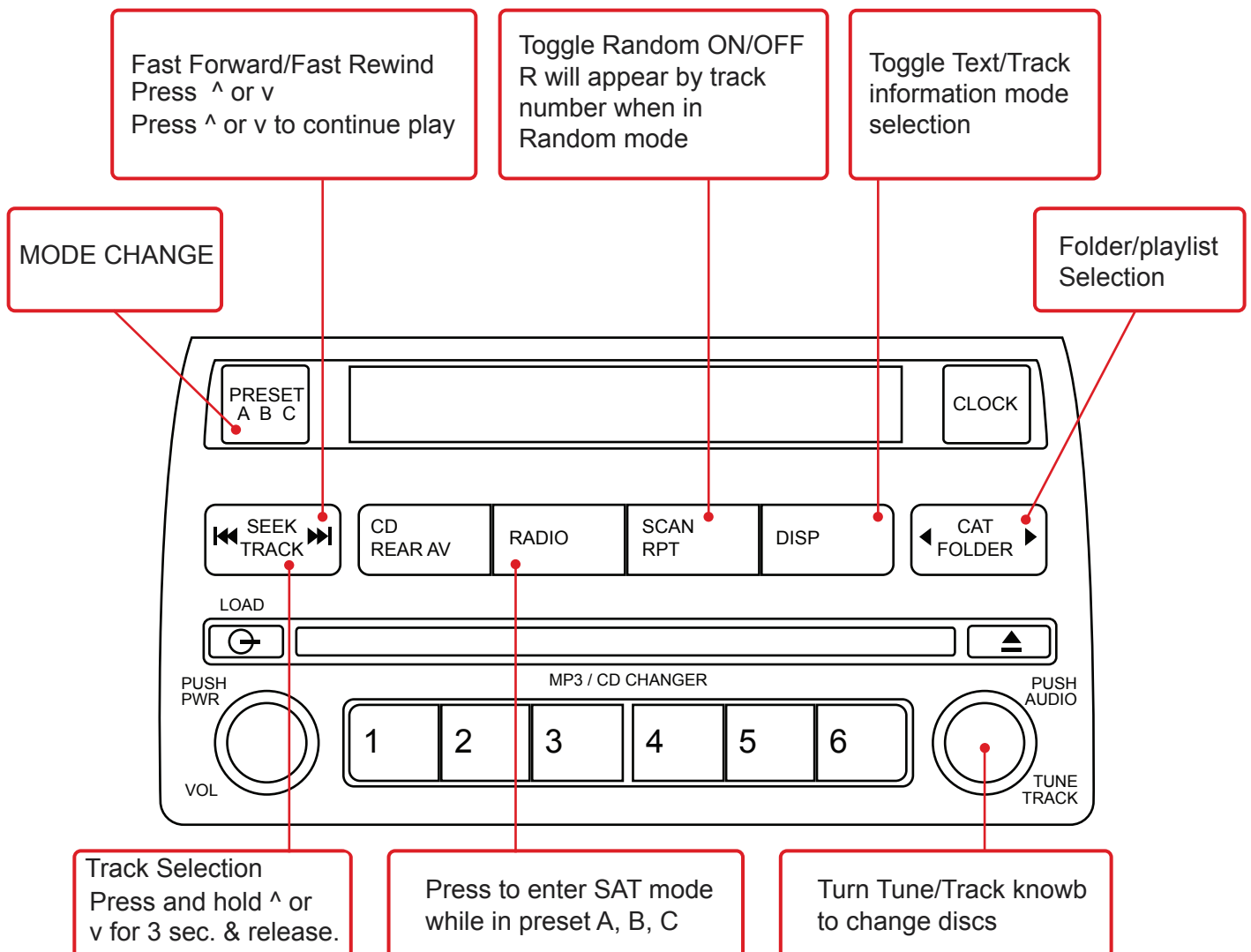
i.e. **XM preset A -> XM Preset B -> XM Preset C**

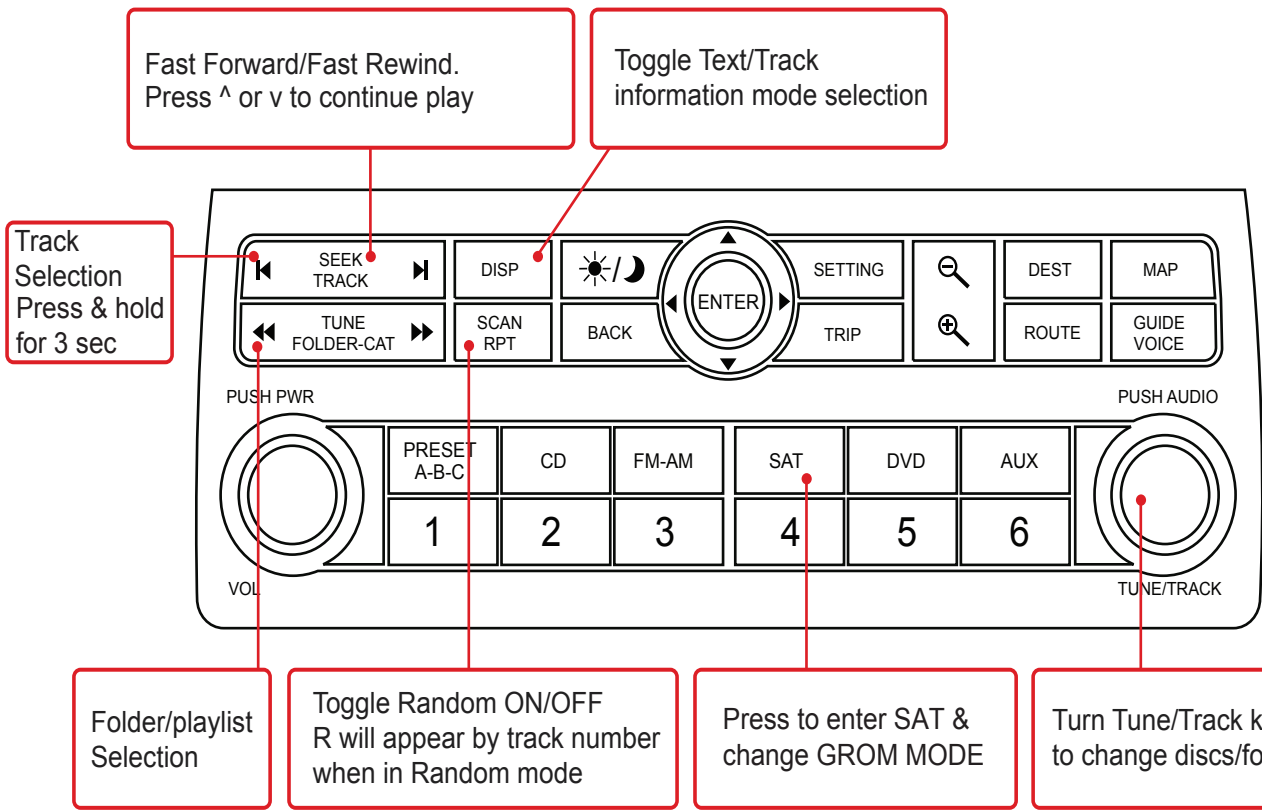
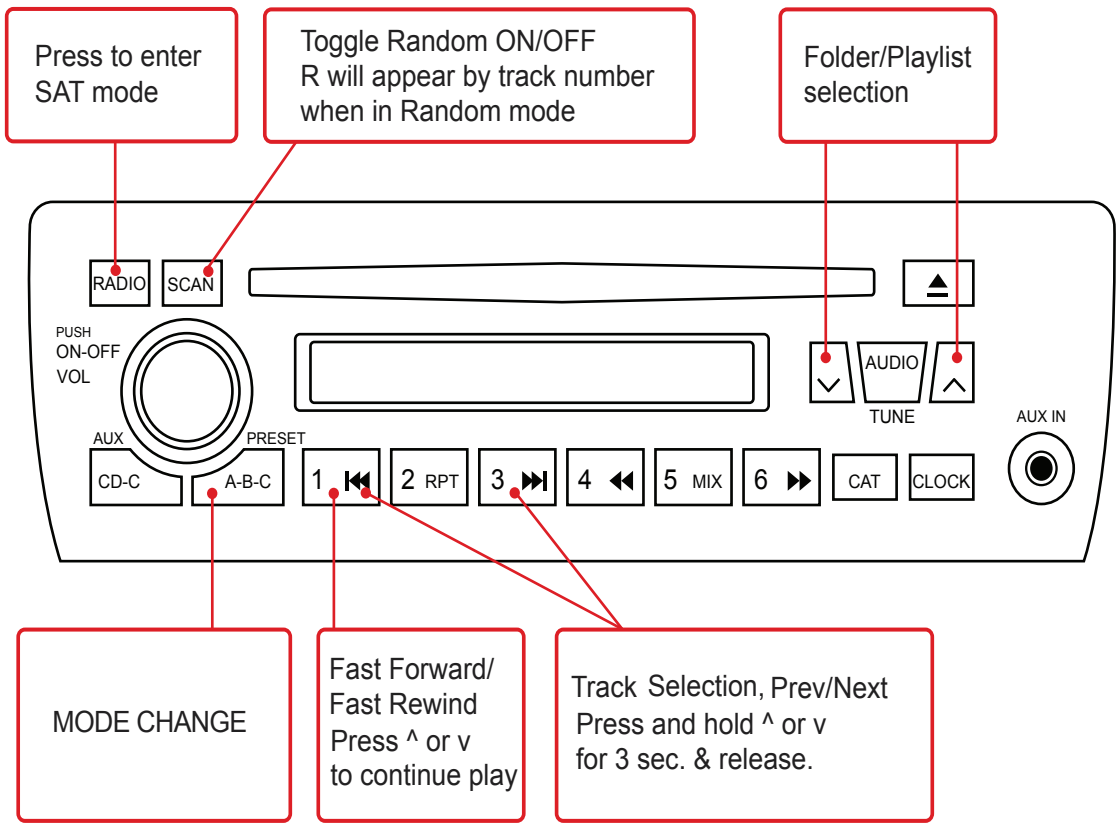
You will hear the Voice Announcing the current Mode. If you Need to Select Another Mode, switch to the next XM/SAT band Again, i.e. **XM preset B -> XM Preset C** by pressing PRESET A B C button until you are in the mode you would like to be in. Make sure you are in XM mode!

Once you hear the desired Mode Announcement, simply wait for 1-2 seconds and the Adapter will start operating in that Mode.

Note: The USB mode and/or AUX mode is not restricted to just one Satellite radio band. Please listen to Announcement to know what Mode you are currently in.

In USB Mode (USB/Android/iOS) the TUNE/FOLDER knob or button will control folder selection or playlist selection. SEEK TRACK buttons control track selection. Presets 1-6 have no function.





## NISSAN/INFINITI Vehicles that do not have PRESET A \* B \* C button

To activate the GROM press SAT button. To switch between the GROM modes, keep pressing SAT button and switch between different SAT channels i.e. XM1 -> XM2

You will hear the Voice Announcing the current Mode. To select another Mode, press SAT button to switch to the next XM/SAT band again, until you are in the mode you would like to be in.

Once you hear the desired Mode announcement, wait for 1-2 seconds and the Adapter will start operating in that Mode.

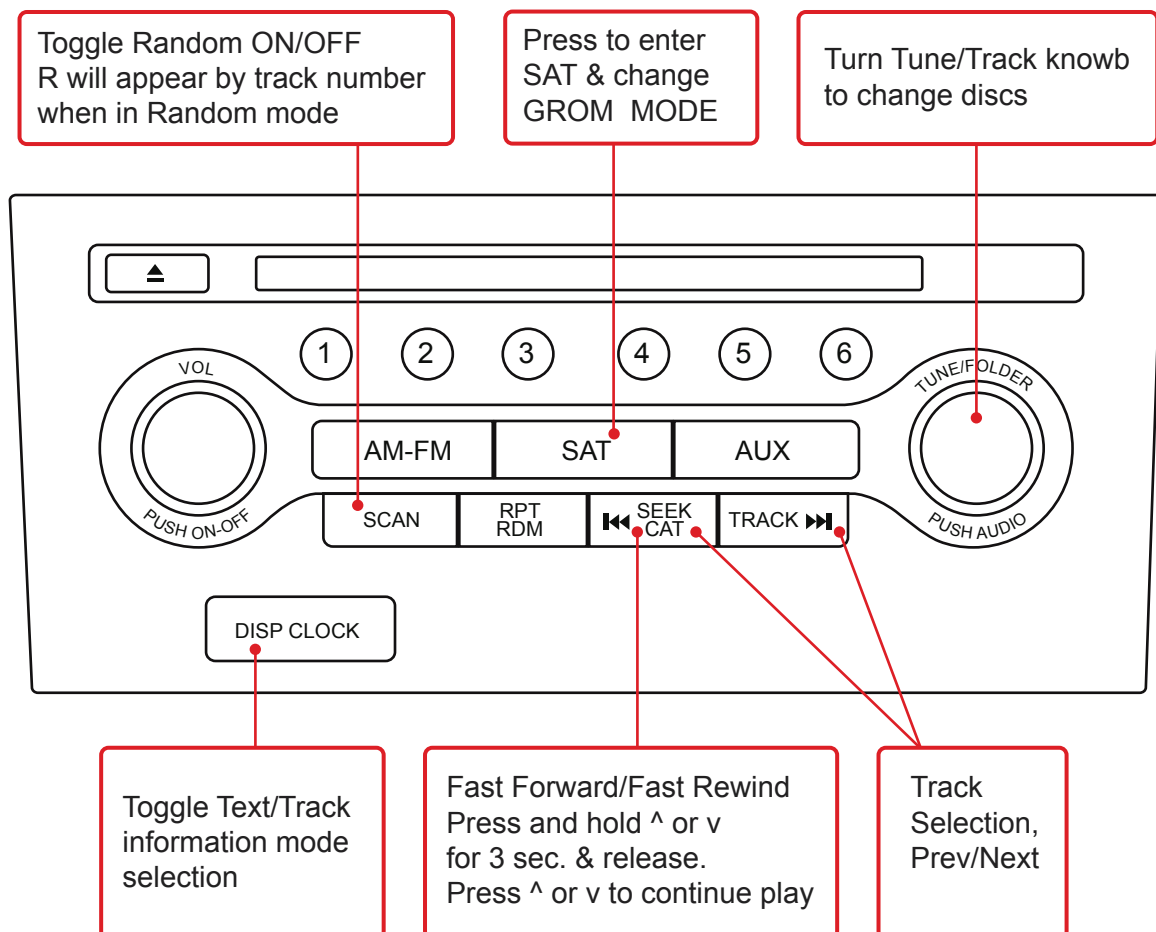
Note: The USB mode and/or AUX mode is not restricted to just one Satellite radio band. Please listen to Announcement to know what Mode you are currently in.

(^ TUNE FF REW v) button controls folder or playlist selection

(^ SEEK TRACK v) button controls track selection

The (DISP) button will control MP3 text from USB flash drives.

Presets 1-6 have no function



\*If SCAN button is missing on a stereo- press and hold Seek Track >| button until it beeps to enable Random.

